



**NEW ORLEANS HOUSING
RECONSTRUCTION + REVISIONING**

PROJECTS FROM THE DESIGN 4 STUDIO
NYIT SCHOOL OF ARCHITECTURE AND DESIGN

Edited by Jamie Palazzolo

Dean Judith DiMaio

In memory of

Kevin Cullen

(1983 - 2006)

New Orleans: Reflecting, Revision, Regeneration, Reconstruction, Reintegration

In the continual development of cities there are events, sometimes catastrophic, which transform the physical and ephemeral identity of that city. Hurricane Katrina not only destroyed homes, businesses, and historic institutions, but also communities and thus attributed to a larger sense of loss. When confronted with loss, many are often comforted through memory and a recollection of the past with others. How can this reconstruction and regeneration of community become envisioned through an architectonic presence?

The program of housing in a Post-Katrina New Orleans has the potential to reflect upon a multiplicity of conditions new to the city. In addition to the physical damage caused by the elements, the city must negotiate the eventual return of evacuees and the potential settling of current aid and construction workers. What is the role of high density housing in a city where the sense of home has been destroyed, residents have been displaced, and the media continually visualizes progress. How can architecture reflect upon the past in order to prevent the possibility for social breakdown in future catastrophic events?

The New Orleans Housing Studio focus is on developing a critical position towards the role of housing and its ability to aid in the formulation of community.

The creation of this Architecture Pamphlet is dedicated to the memory of Kevin Cullen, a Student and Friend to many here at NYIT.

- Jamie Palazzolo

New York Institute of Technology, Dept. of Architecture and Design

Judith DiMaio, Dean
David Diamond, Chairman Manhattan Campus
Bill Palmore, Chairman Old Westbury Campus

Jamie Palazzolo, Adjunct Associate Professor
Special thanks to Max Montrey for his assistance in the development of this Architecture Pamphlet
2007

Third Year 2006 NYIT students undertook this studio assignment with a creative optimism.
Participants include:

-Marcell Alberti
-Sam Blythe
-Anthony Cestra
-Kevin Cullen
-Adrian Franco
-Cheryl Isaacs
-Yazmin Islas
-Cory Lee
-Max Montrey
-Micah Sherman
-Sartaj Singh
-Dimitri Syrom

program key:

	studio
	1 bedroom
	2 bedroom
	3 bedroom





MM1

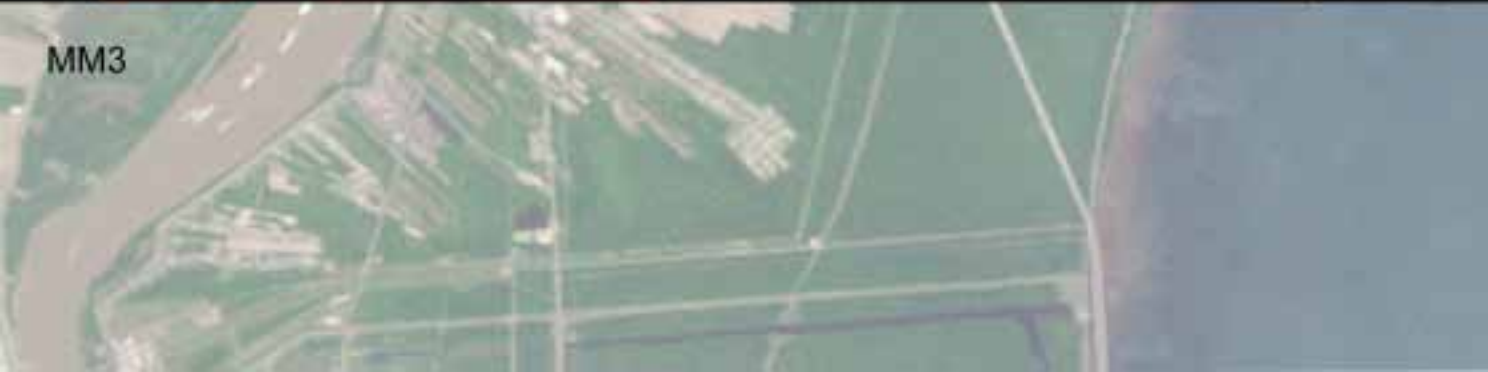


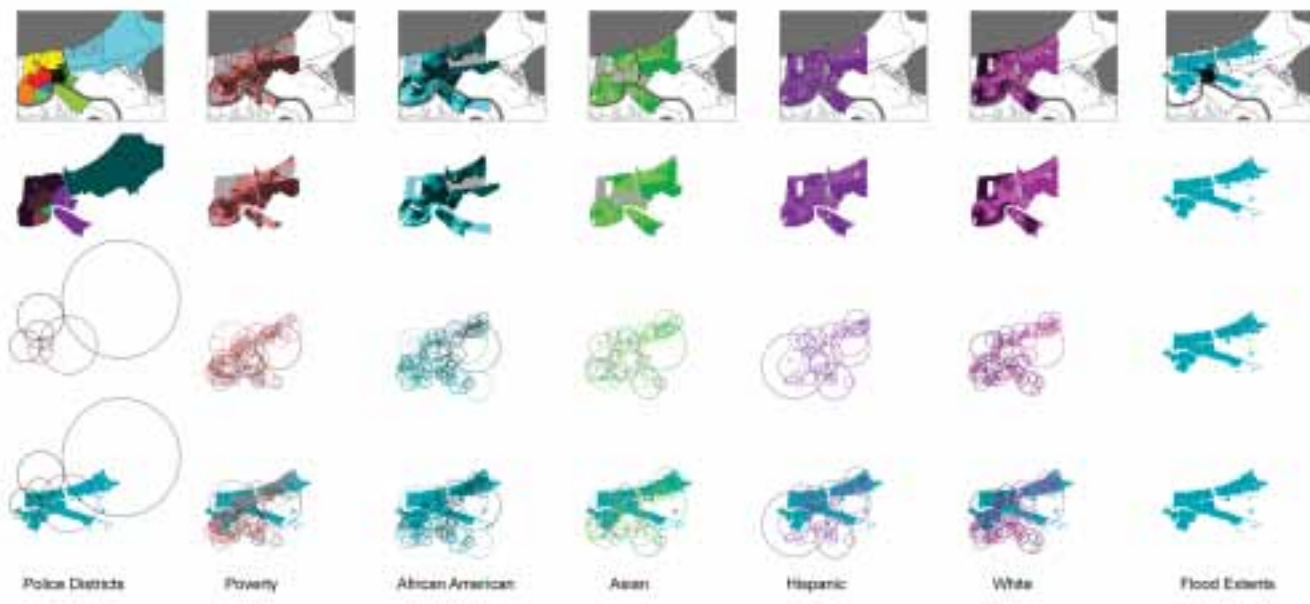


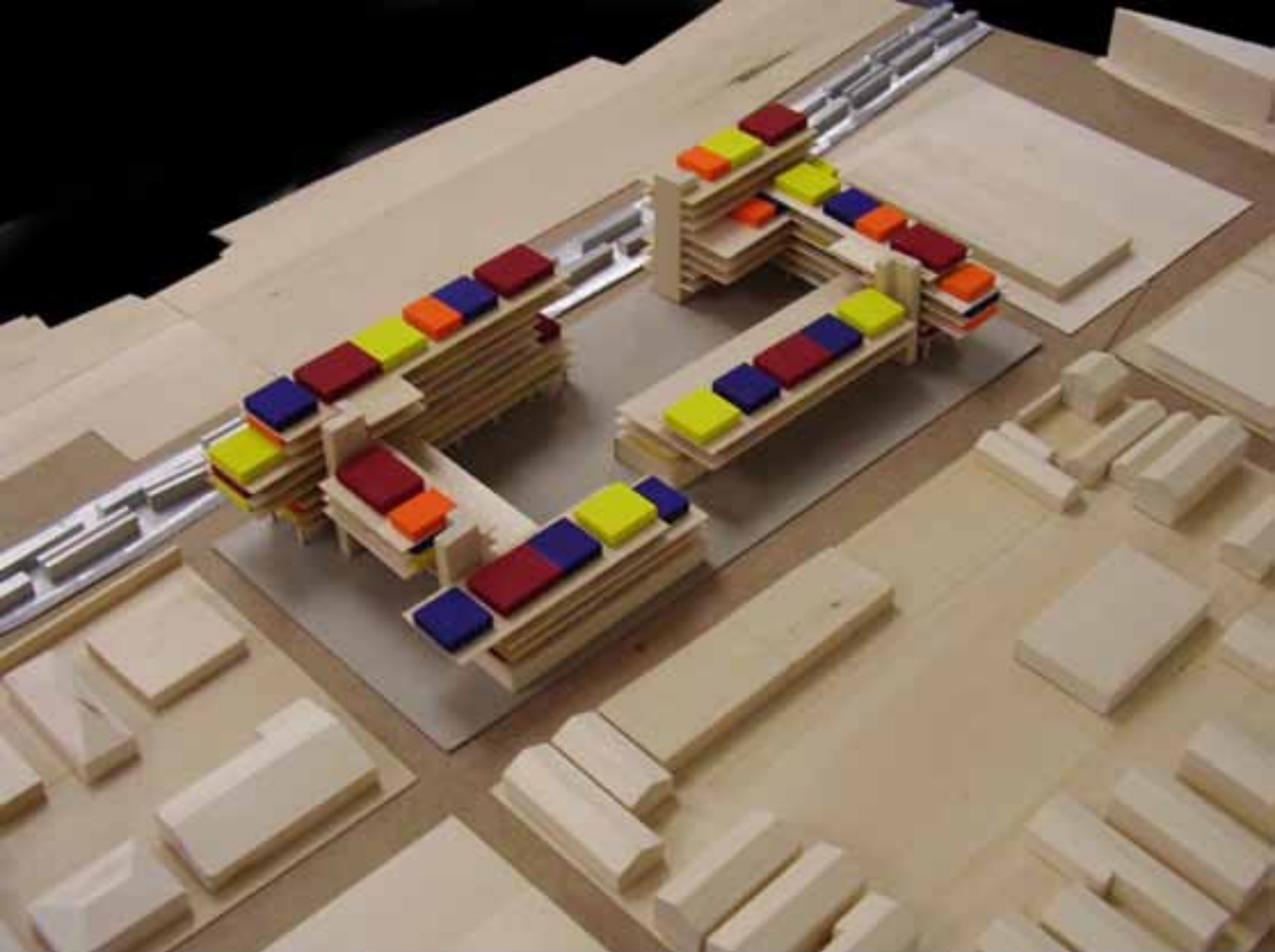
MM2



MM3

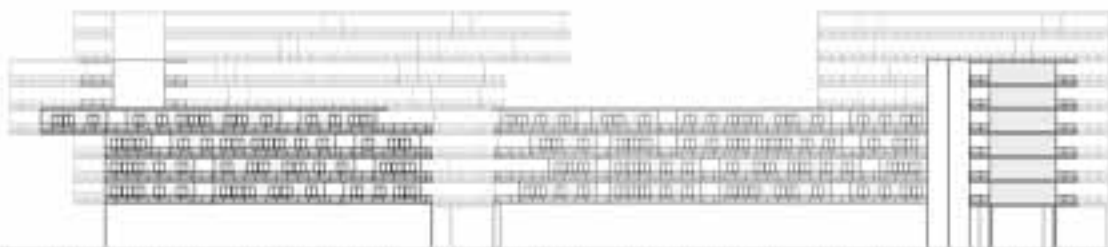
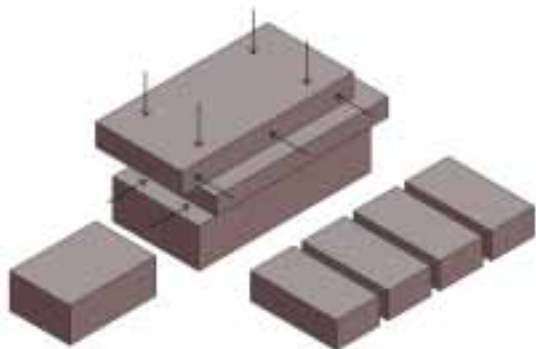




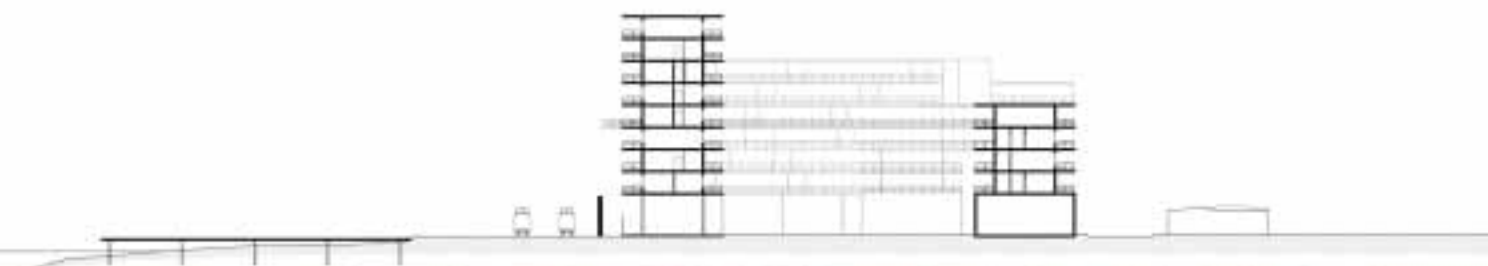
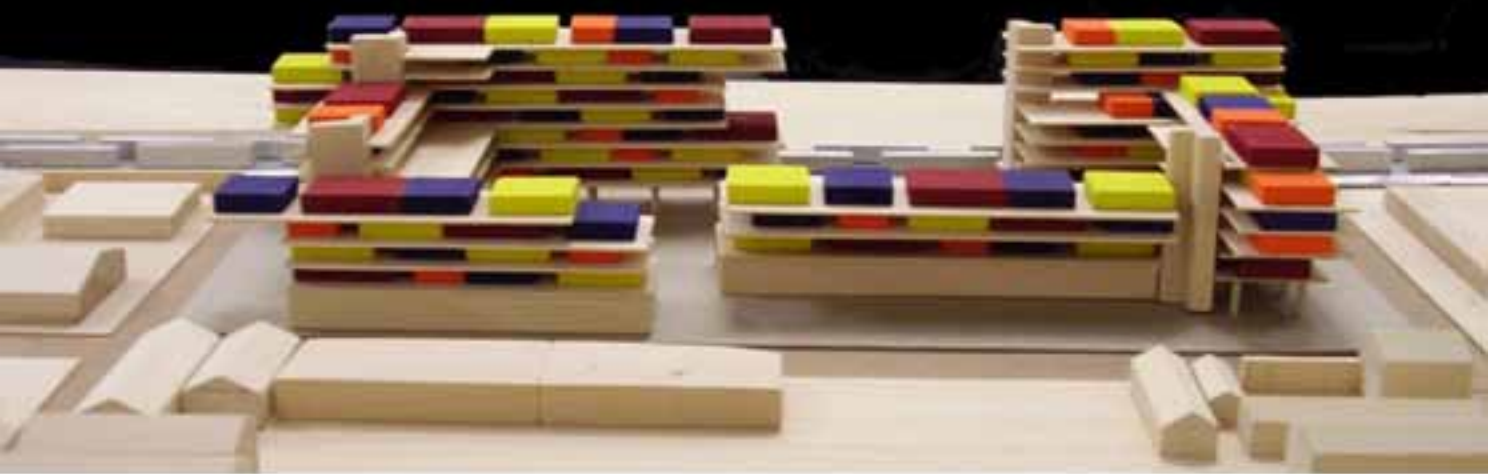


CI1



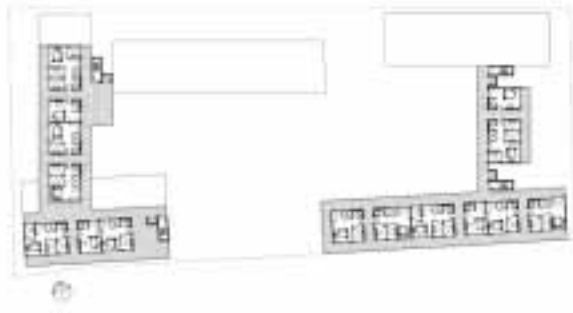


CI2



CI3



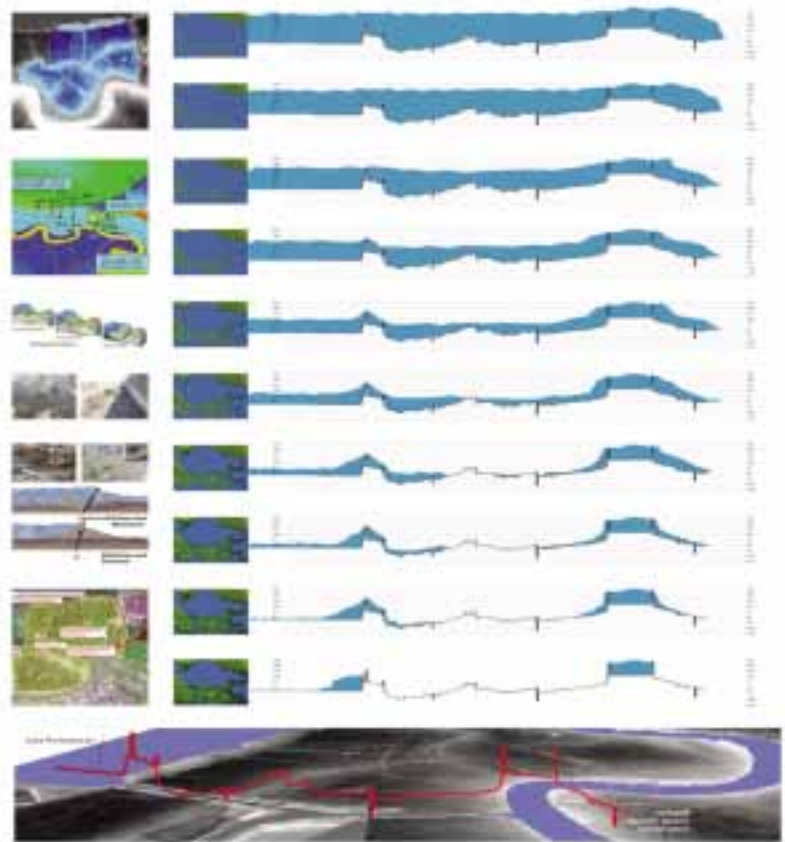


CI4

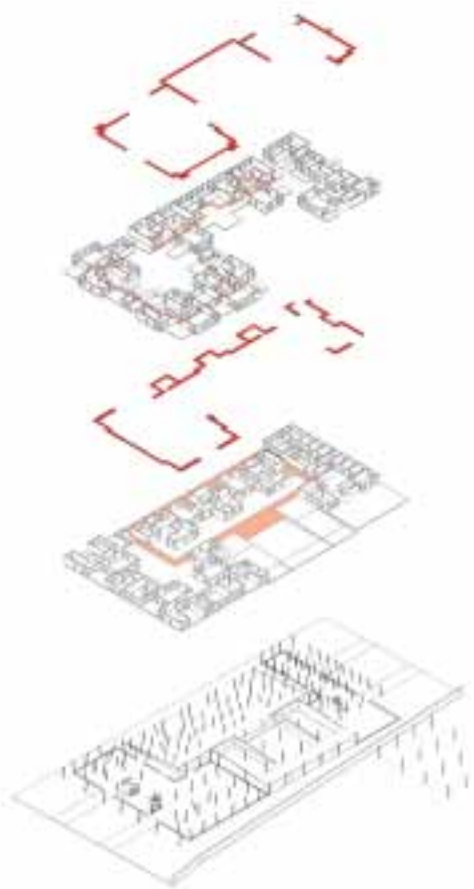


AC1



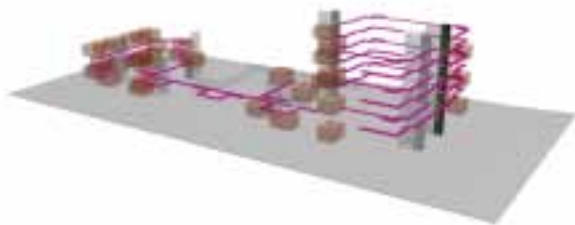
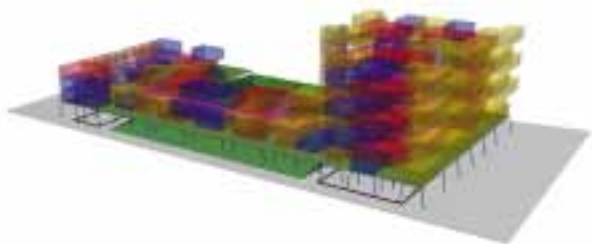


AC2

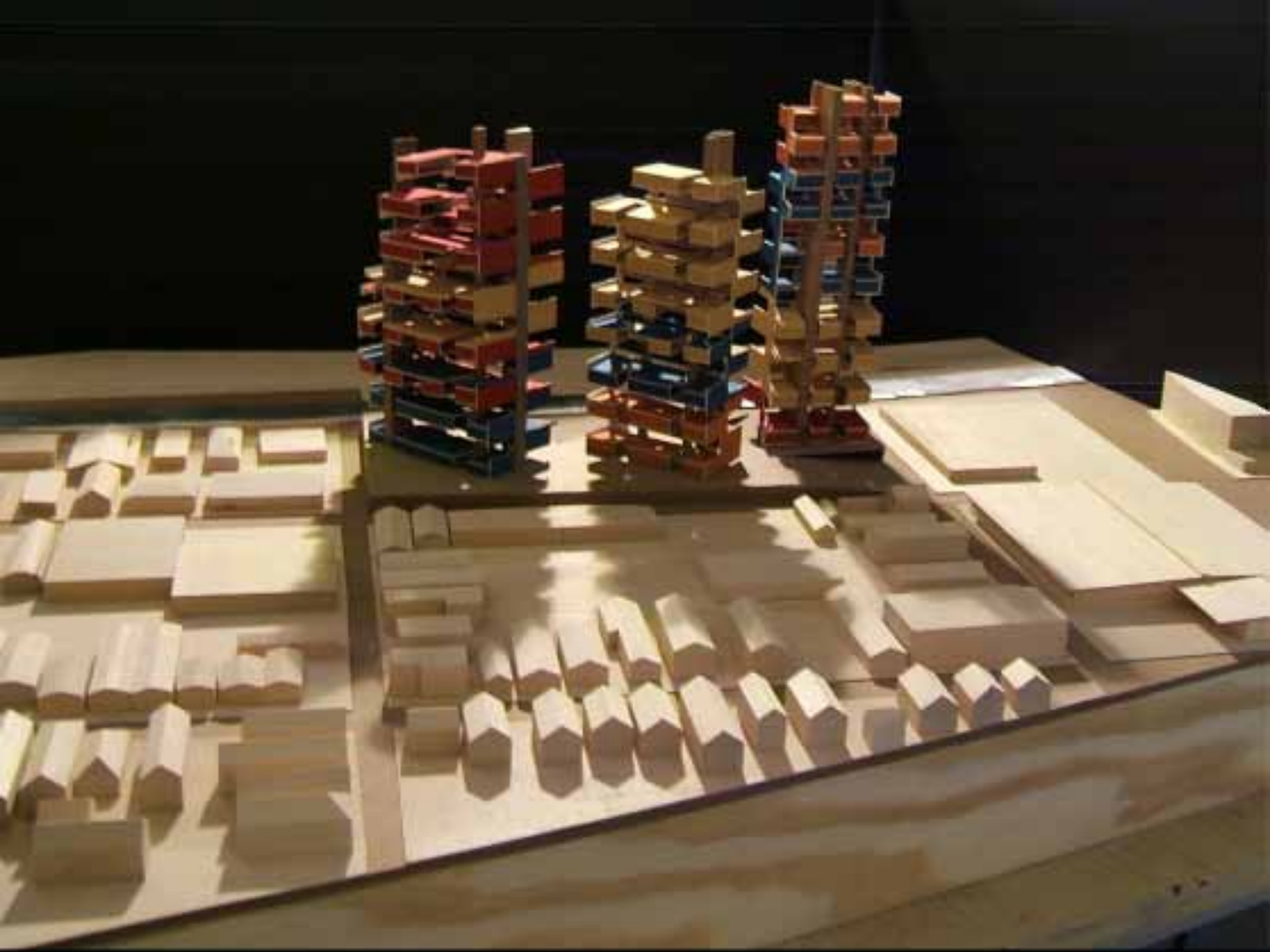


AC3

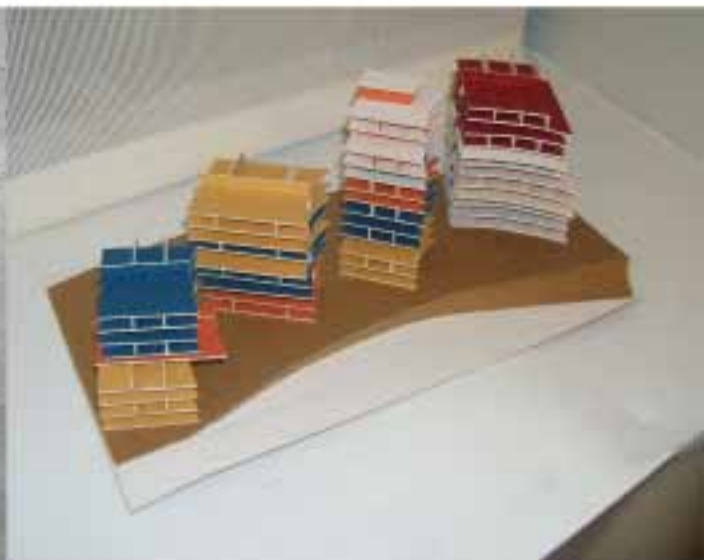


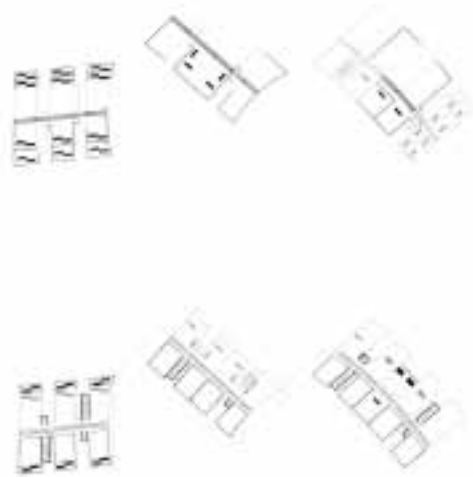


AC4

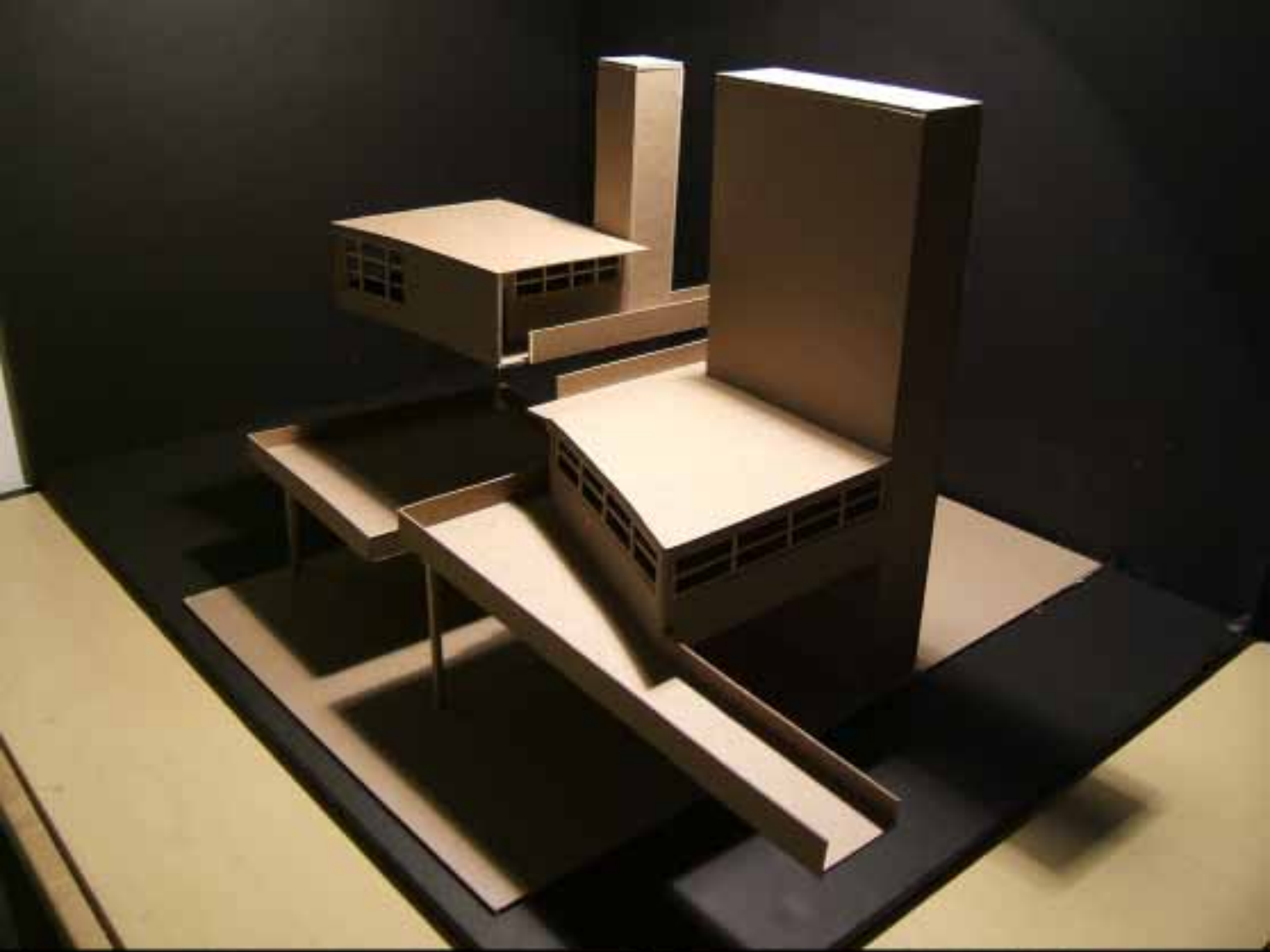


AF1

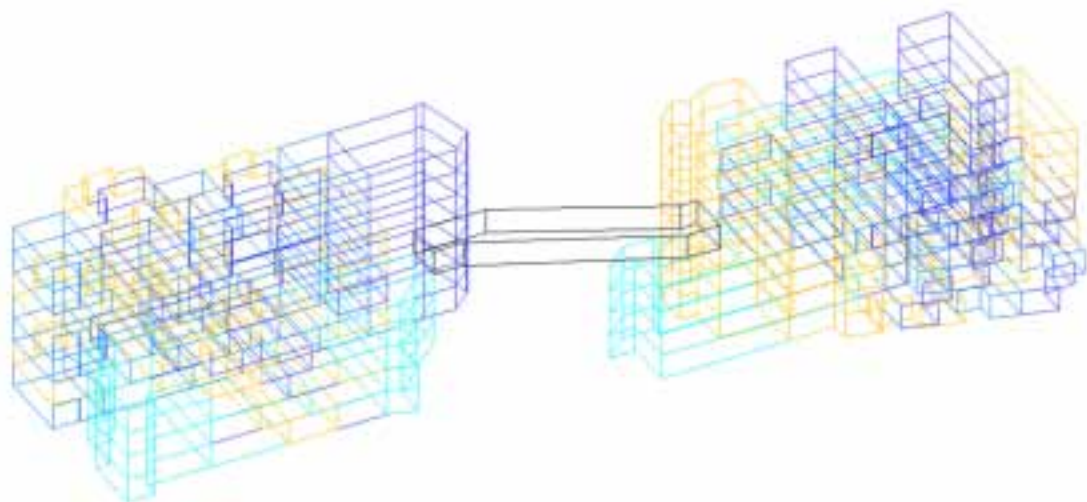




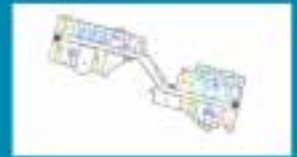
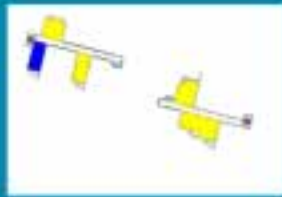
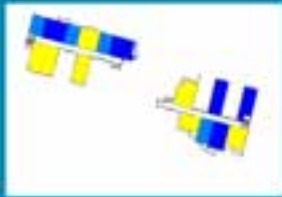
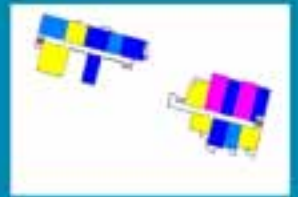
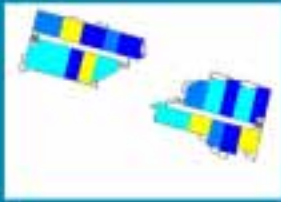
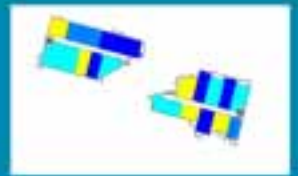
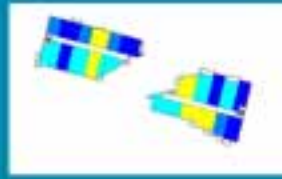
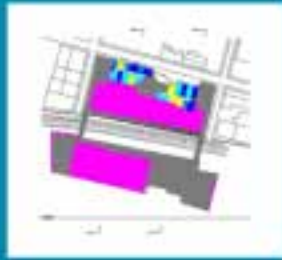
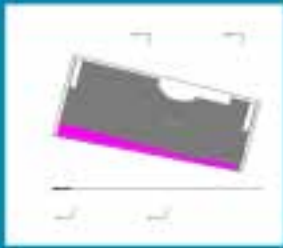
AF3







DS2



DS3

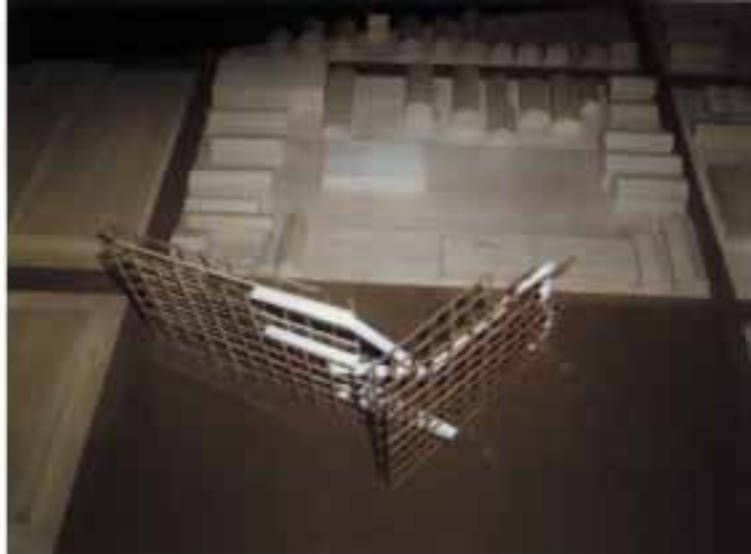
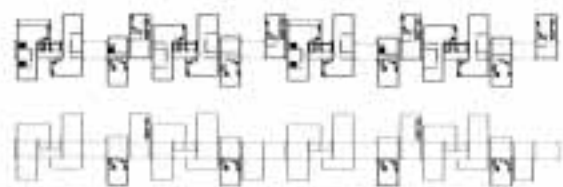


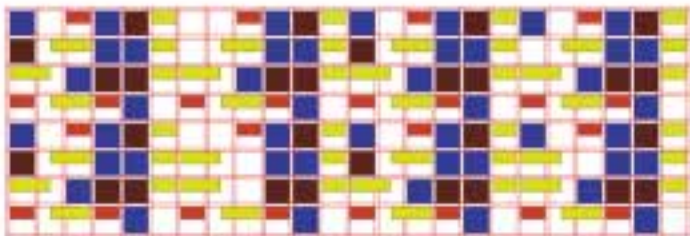
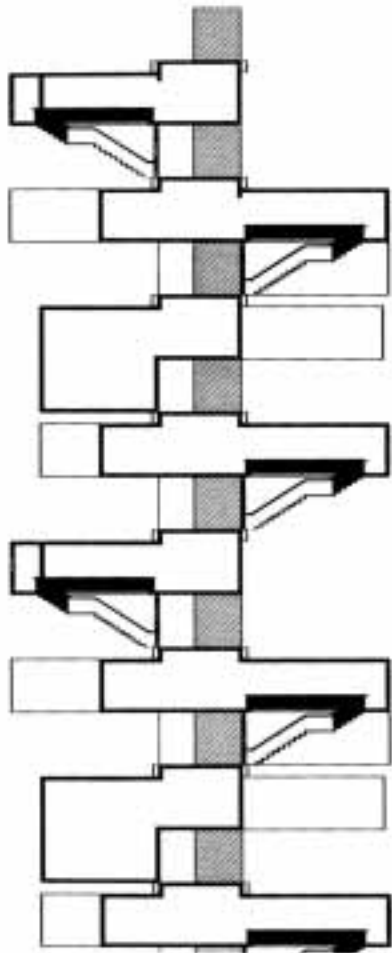


DS4



KC1



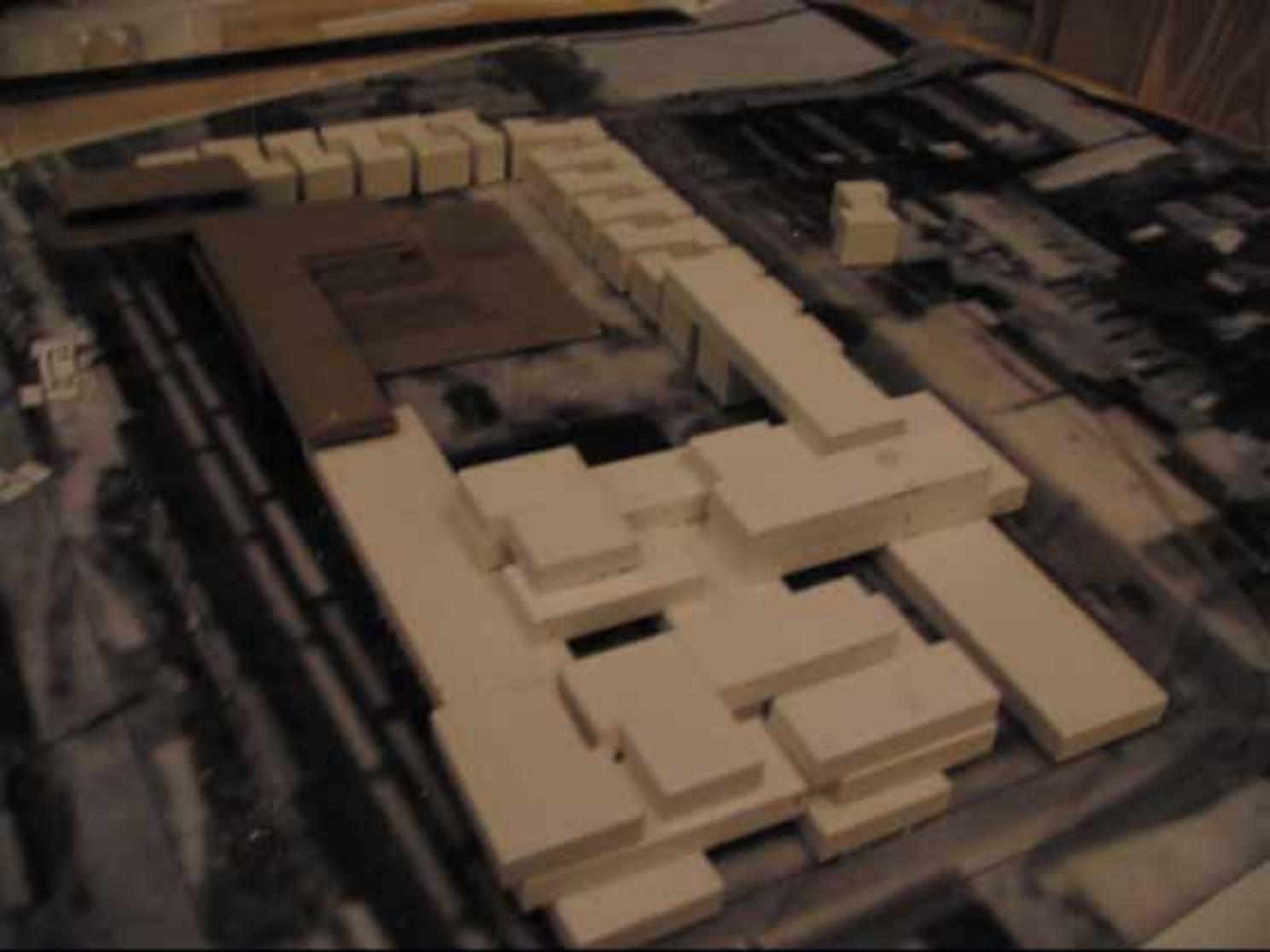


KC3

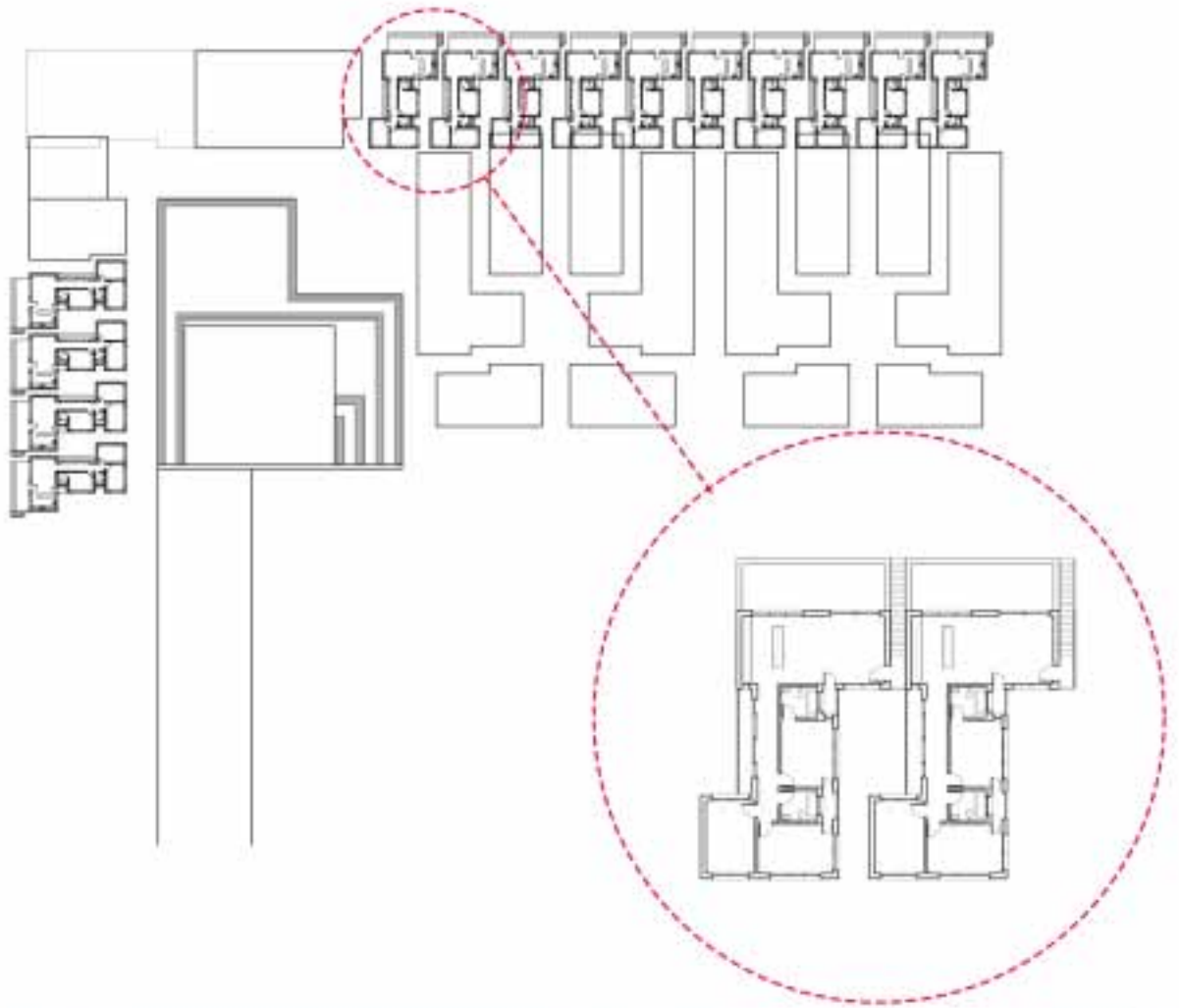


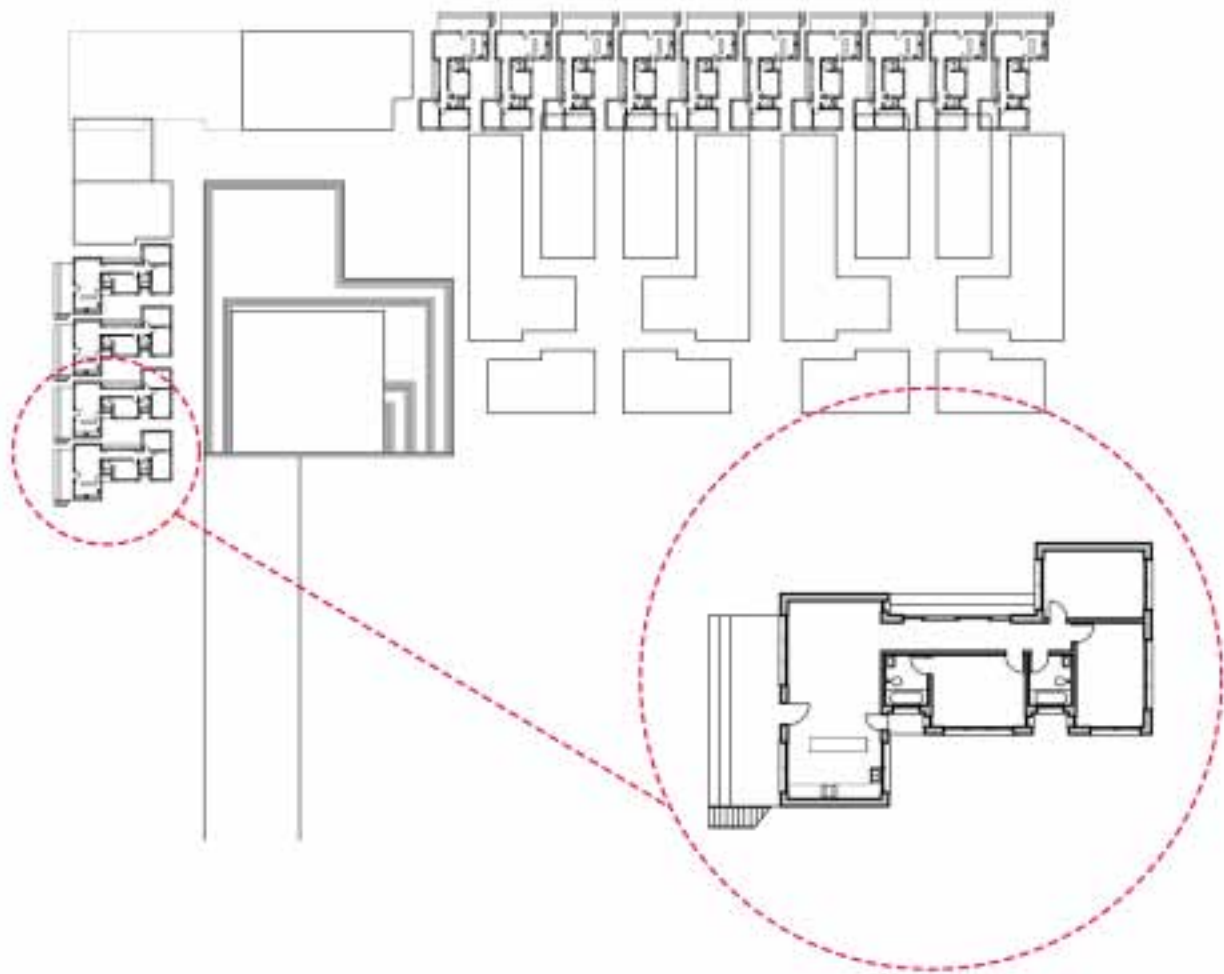


KC4



SB1



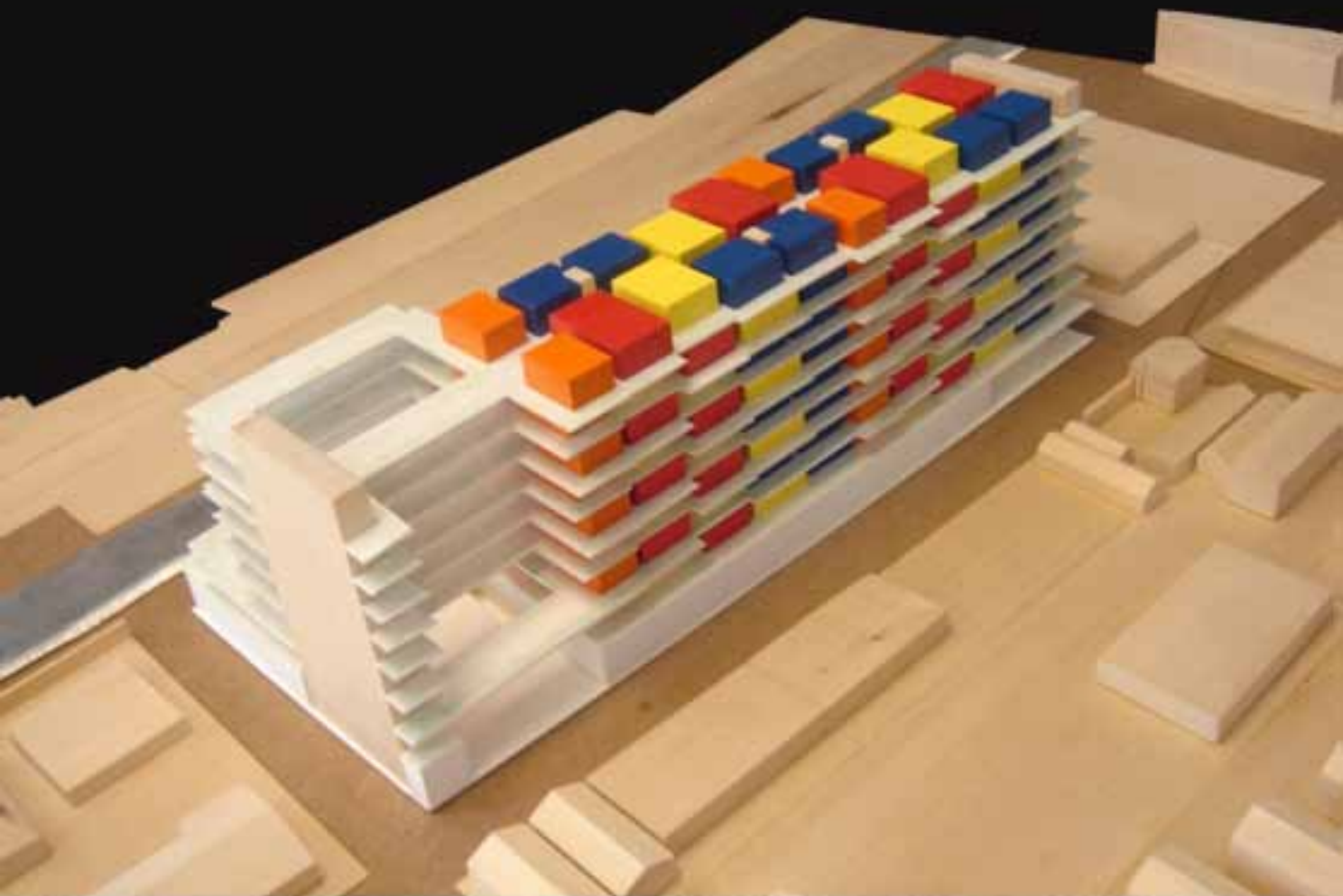


SB3



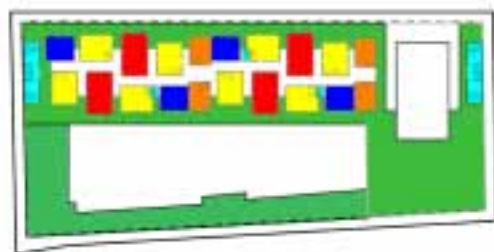


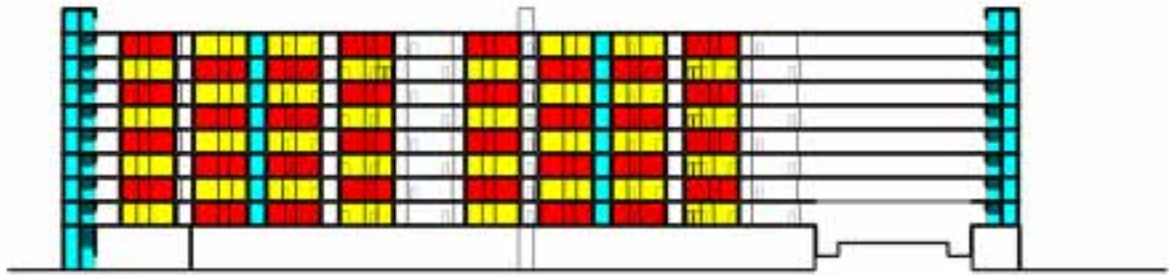
SB4



Y11

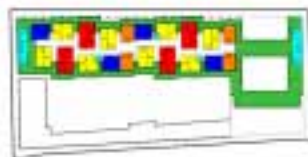
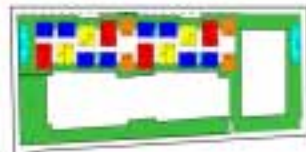
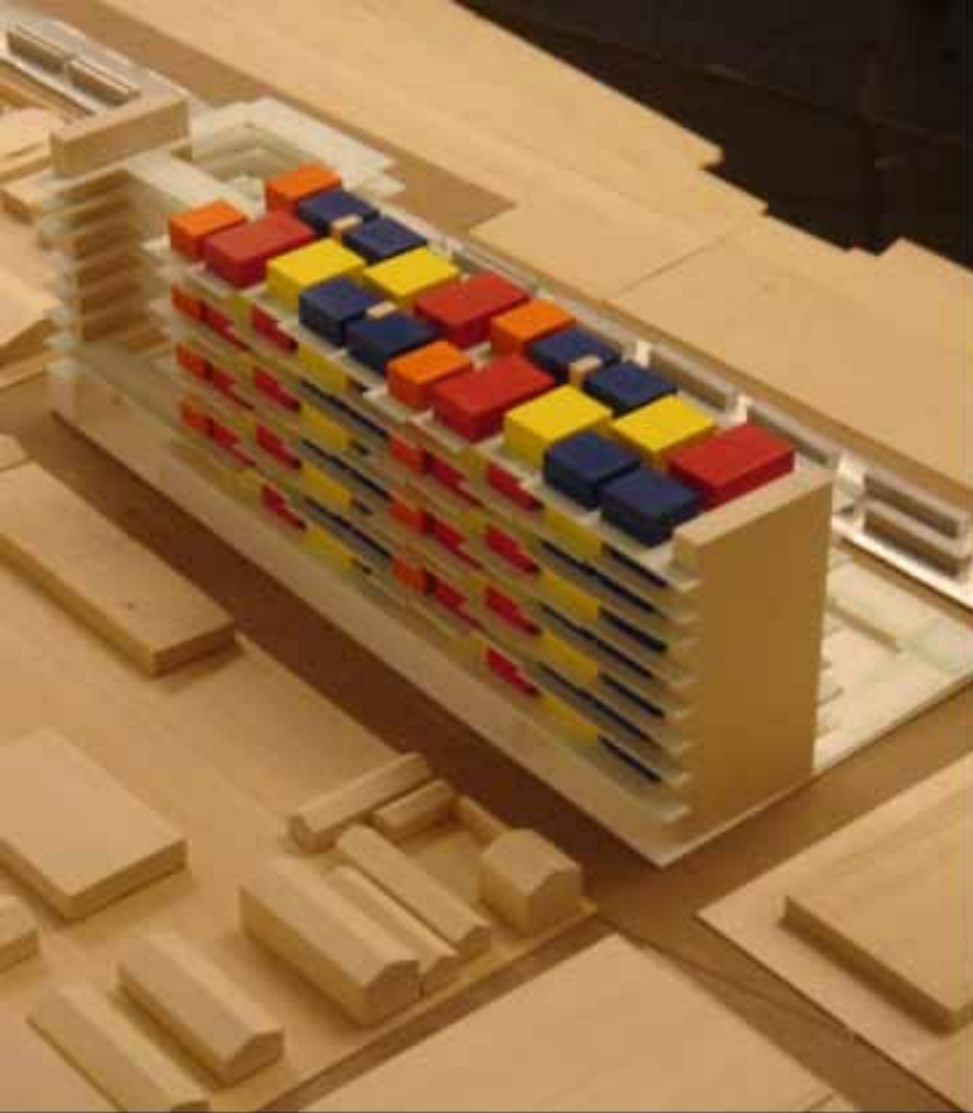


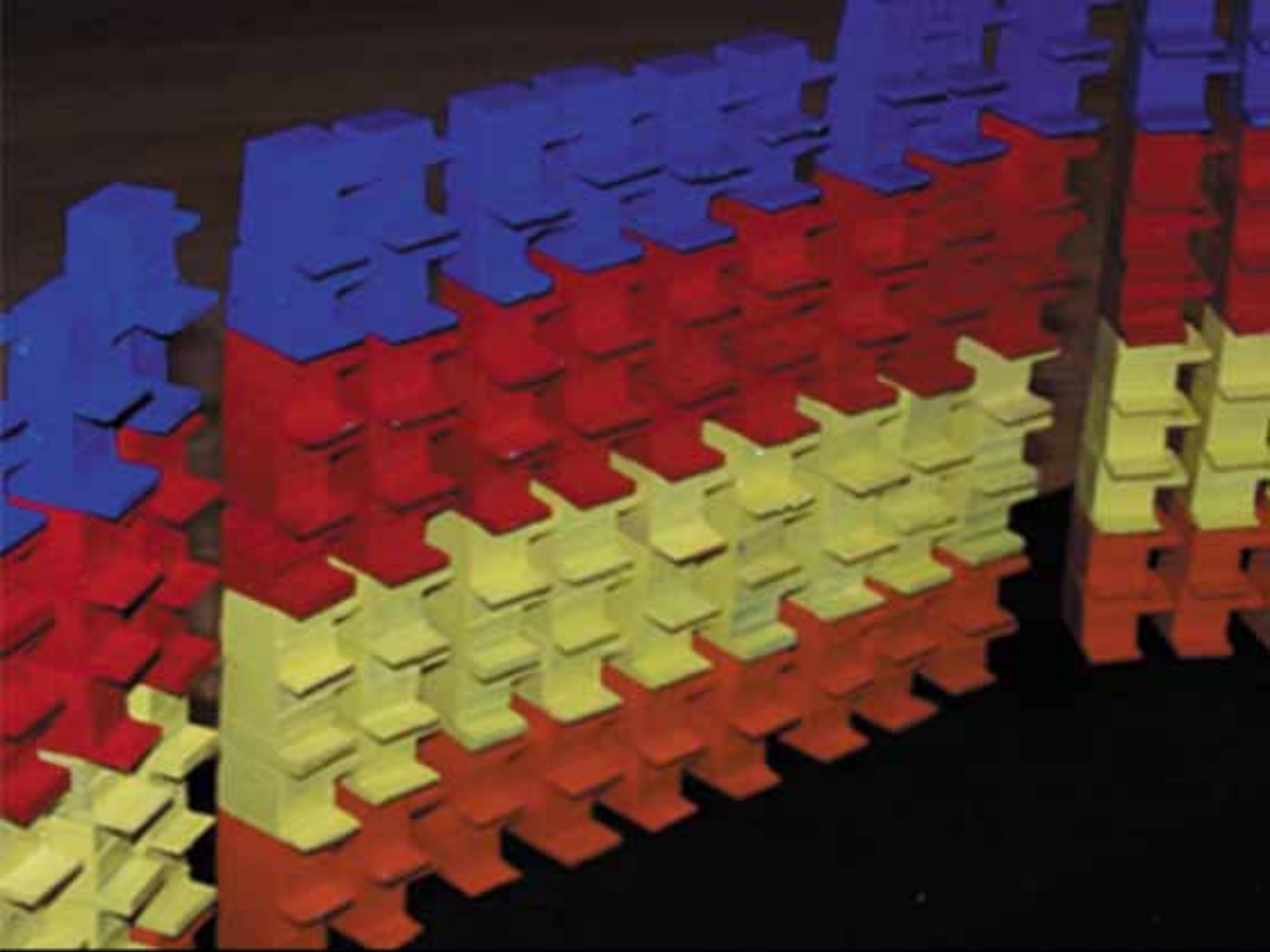




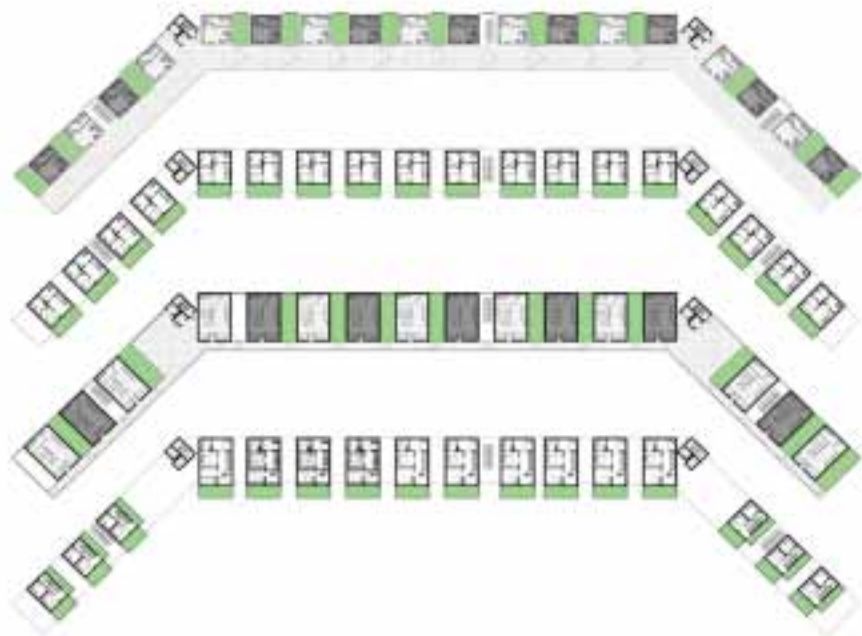
Y13



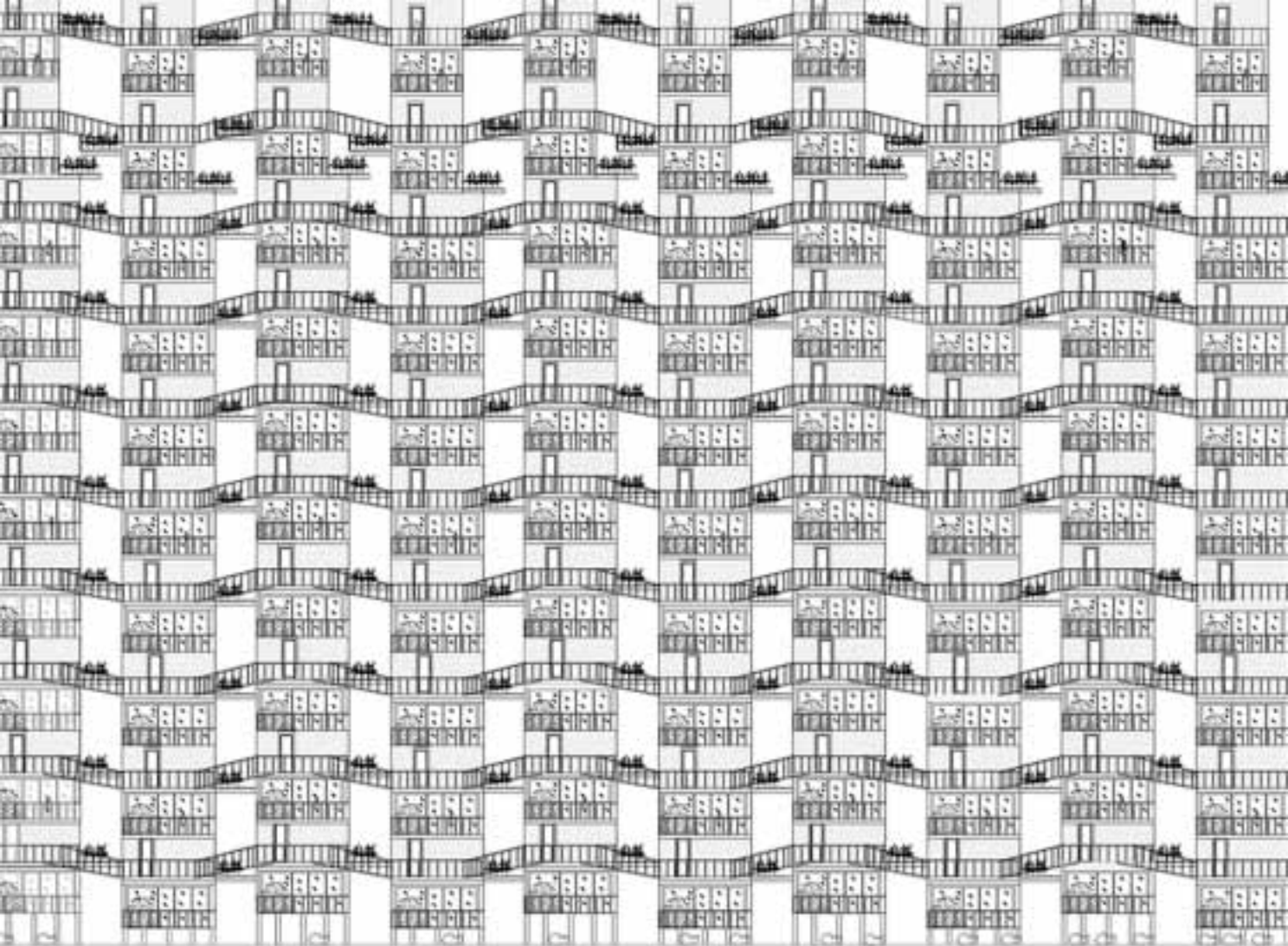




SS1

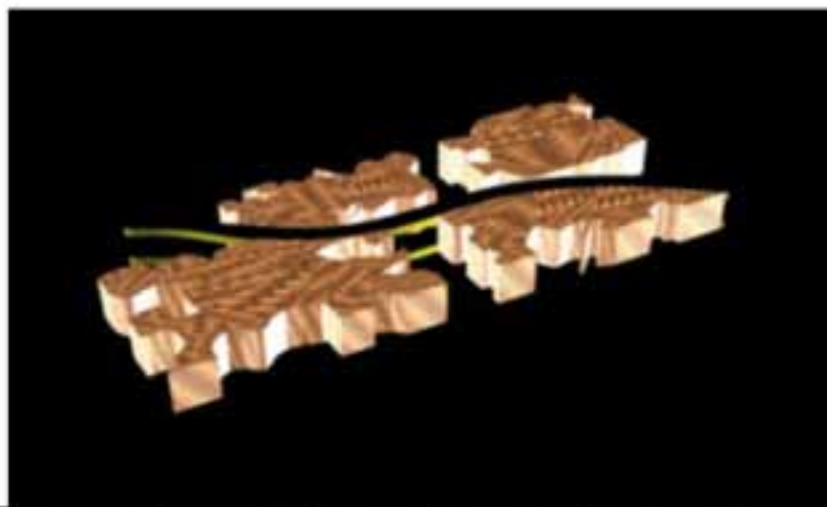


SS2

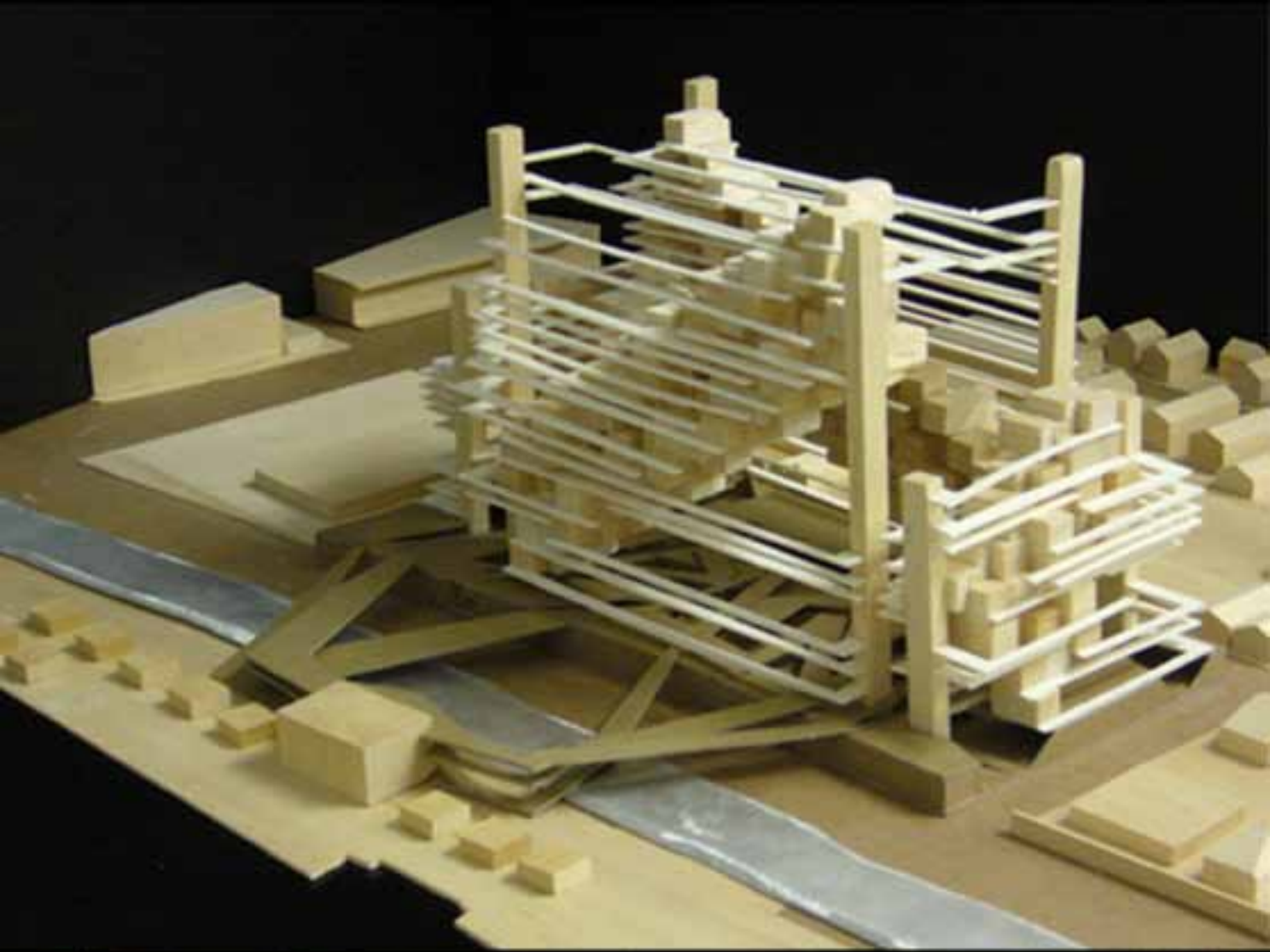


SS3



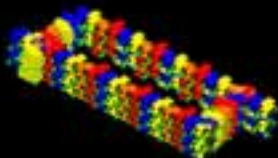
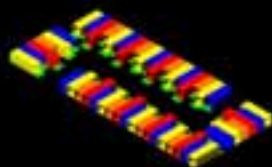
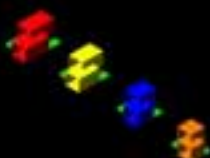
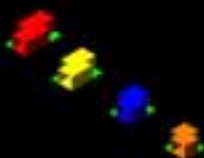


SS4

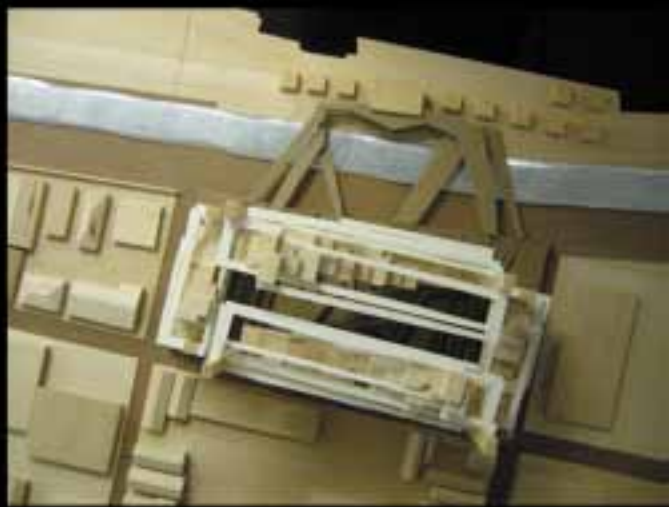
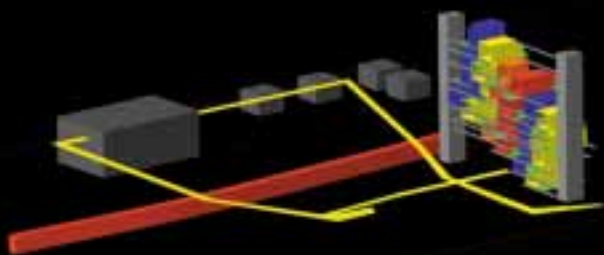
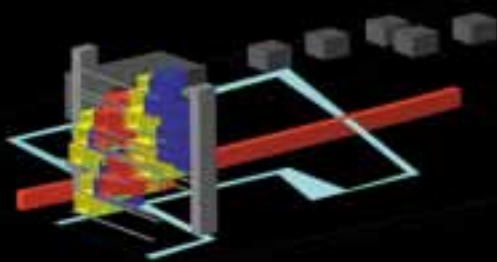


CL1



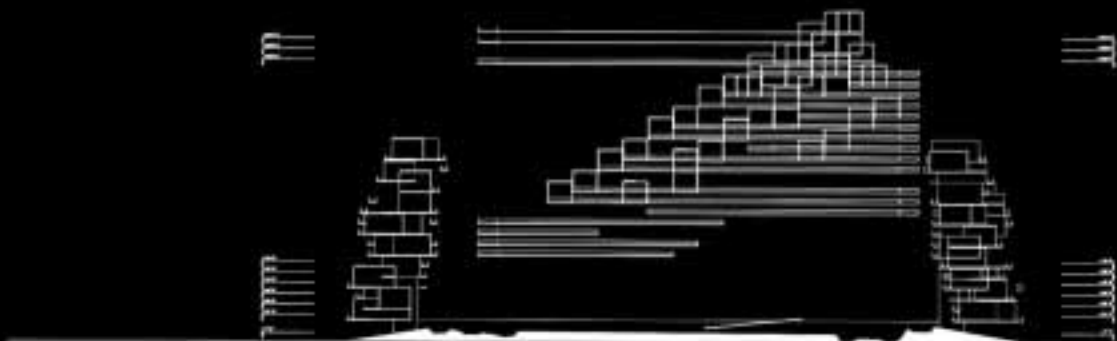


CL2



CL3

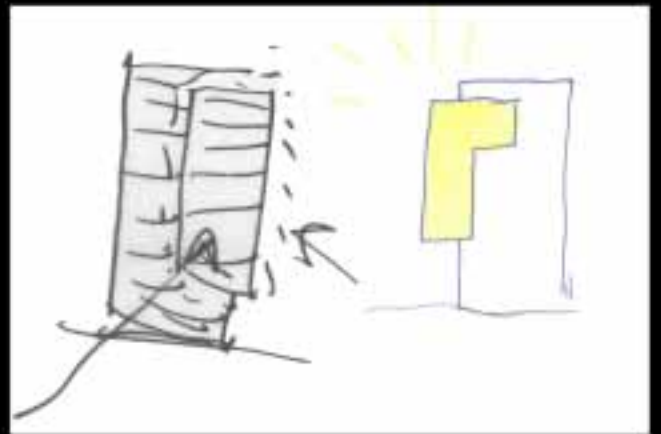




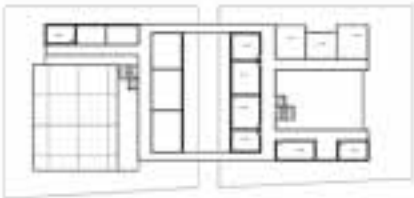
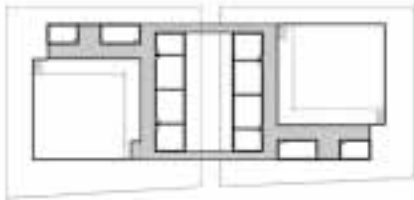
CL4



MA1

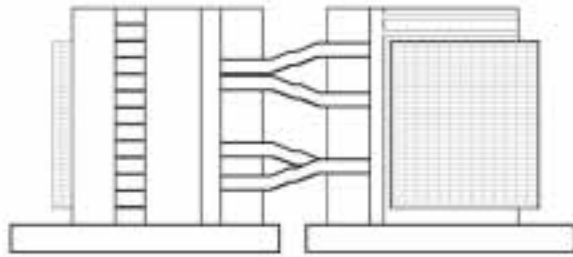
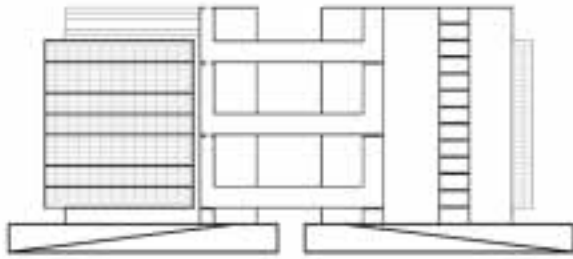


MA2

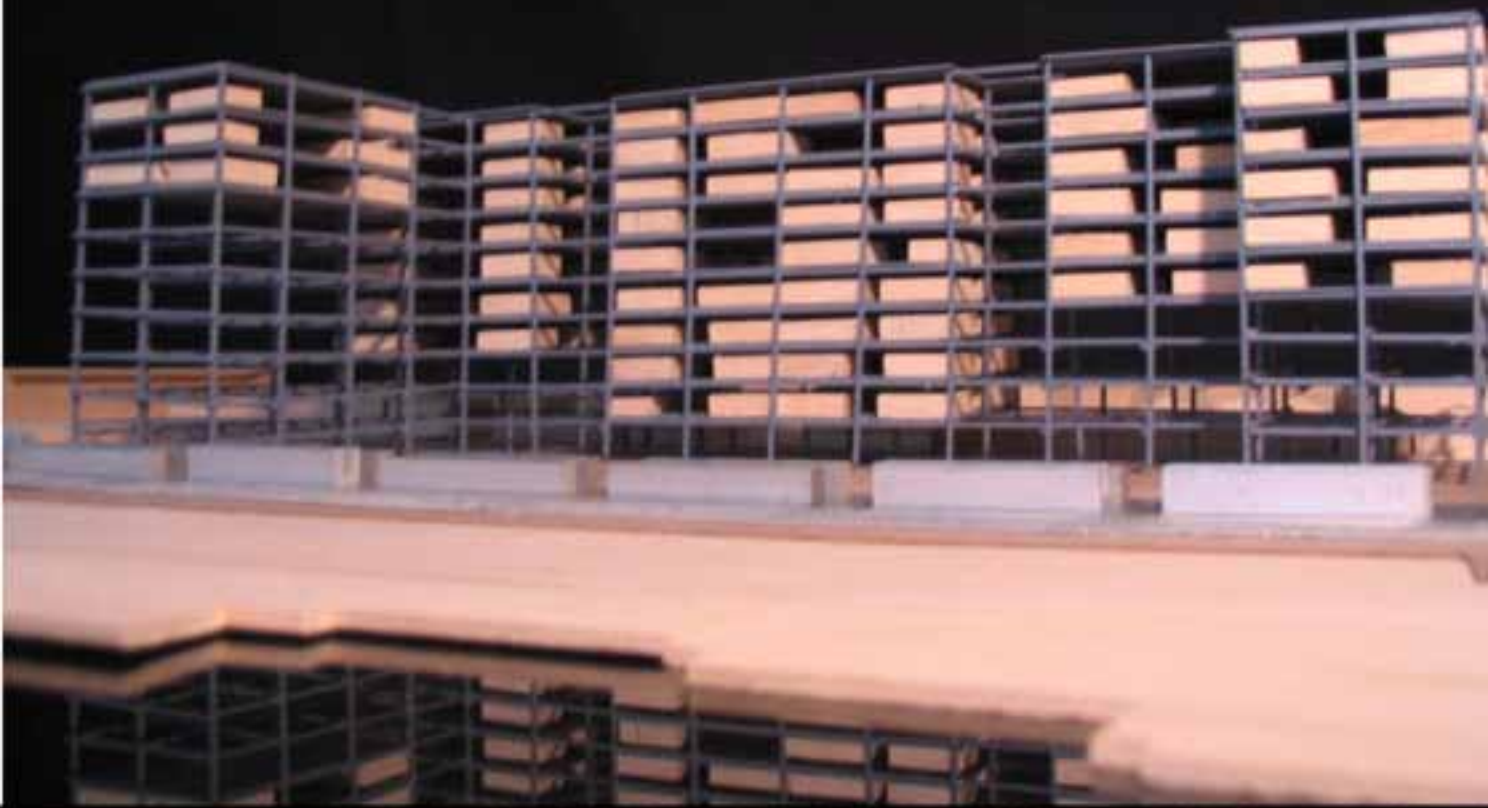


MA3



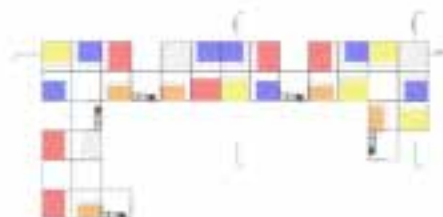
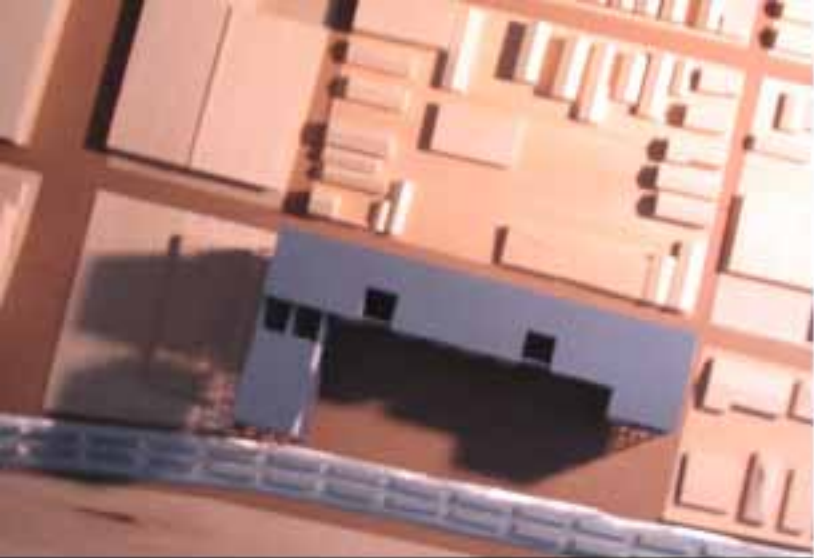


MA4



MS1





MS2

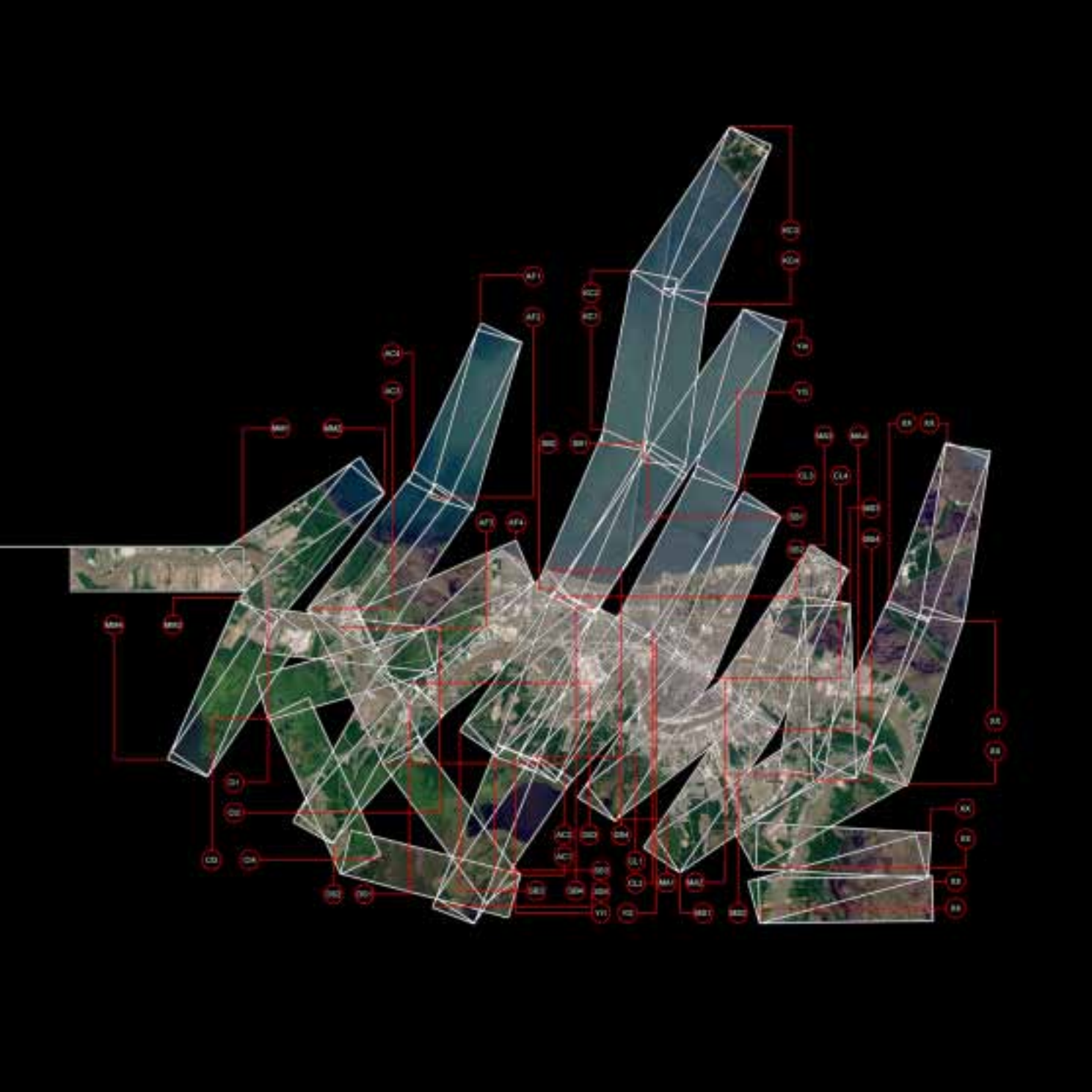


MS3





MS4

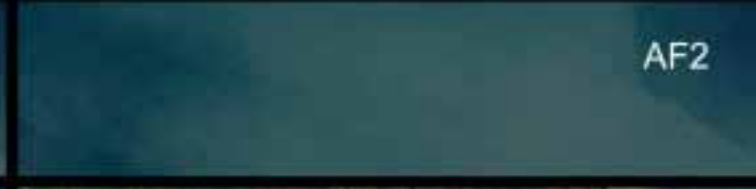
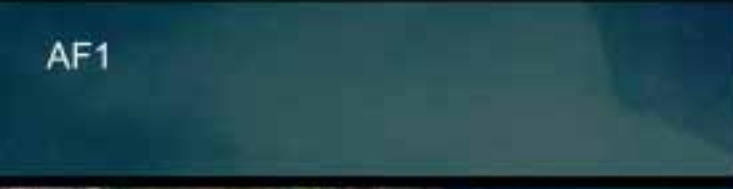


MM 1-4 *Max Montrey, Detritus* Can we use the detritus of the hurricane to alleviate other problems, namely the hurricane itself? This design builds on the introductory housing project, leveraging the careful arrangement of sight lines to empower the inhabitants against any unwanted infiltration by outsiders. The design is tall, with all rooms of all units containing windows. Just as the unit configuration is equalized, the building turns to open up more opportunities for the inhabitants to inspect the landscape. The building footprint itself is small to compact space and make effective the possibility of resident interaction and overall external awareness. And, the building is placed on a mound with a winding path so that the facing units can inspect any potential visitors. It is this mound that solves the next problem - the water. The debris of the hurricane moves from problem to solution - the mound of debris is the wall. This imposing structure acts as a deterrent to the water and to crime. This wall stands well above the potential water line since the city itself lies at or below sea level in most areas. This mound rises higher than a 100 year flood with increases for sea level increases due to global warming. It is created as both a practical physical barrier to potential natural dangers and as an ideological reminder that perhaps we should work with the environment - lest we find ourselves in ruin.

CI 1-4 *Cheryl Isaacs*

AC 1-4 *Antony Cestra, The Aware Housing Complex* It's aware of the global warming and the rise in level of the water therefore the first level is sitting on a huge platform 20' above street level using a method inspired by stilt houses. It's aware of the hot humid weather condition so cross ventilation is considered in designing each unit providing a balcony by rotating the unit above in each floor plan. It's aware of the New Orleans house type because while New Orleans was destroyed by a hurricane, now a housing complex exists that's the result of a deep analysis of what was the precedent, making this proposal something special for the community.

AF 1-4 *Adrian Franco*

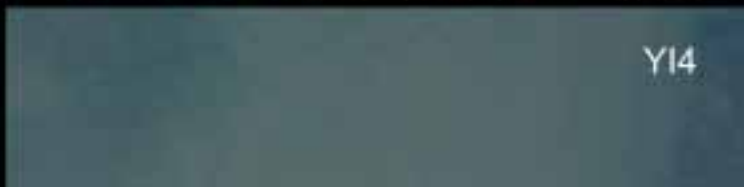
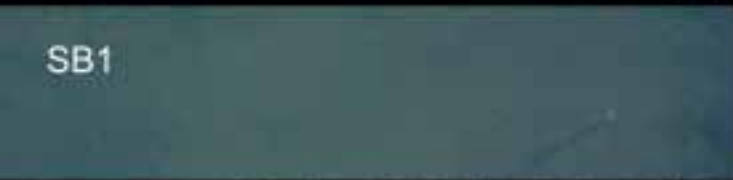


DS 1-4 *Dmitri Syrom, Experience of Communities* Before I came up with my concept I thought how to bring people back to New Orleans. Since Hurricane Katrina passed people lost everything and some did not want to come back. So by researching this my concept was to take a new and old neighborhood and combine them as a whole. I have them semi-public, semi-private courtyards. I also added the pier on the other side which includes the park, the fishing place, the café and removable concert/activity area.

KC 1-4 *Kevin Cullen*

SB 1-4 *Sam Blythe*

YI 1-4 *Yazmin Islas* My approach to this project was simply to use shifting as a way to investigate how the units could relate to each other. In doing this I created a central corridor that has framed views along its length while the rest of the circulation (in the form of platforms) serves as possible recreation space overlooking the river. In addition the shifting also made it possible to create separate terraces for each of the units with views to the river and the surrounding neighborhood.



SS 1-4 *Sartaj Singh, Vertical Living* In Le Corbusier's building Immebula, he conveys this type of concept, where every apartment has its own uniqueness, its own individuality, and its own expression. Not only are the spatial aspects of the apartments unique, but the people inhabiting these apartments are unique as well. The people living in this area may be conditioned to certain design measures, so this solution does not necessarily represent a final product for the urban housing solution.

Vertical living/lifestyle is not a new invention, but there are new ways in designing spaces within the vertical arena. In a residential vertical setting, I've introduced the idea of neighborhoods on an individual floor. For instance, the second floor consists of only three bedroom duplexes where the most likely occupants will be people with children in need of more space than other residents. By keeping all apartment types in one area it creates safety among the individual floors.

CL 1-4 *Corey Lee* This project followed the same set of rules as the 28 unit exercise while incorporating the New Orleans shotgun house as well as a more integrated sectional condition and unit configuration. There are 8 unit types Studio, 1, 2, 3 bedrooms, both single and duplex apartments. There are four quadrants that share this site and visually interact with each other until reaching the mixing chamber on the site across the train tracks where they can finally physically interact.

MA 1-4 *Marcell Alberti* To develop a one hundred and twenty unit apartment and retail building on a site in the Industrial part of New Orleans (post-Katrina). Using the symbol of a lighthouse to bring back hope into the community. The retail center located within the building being the driving financial force for the surrounding neighborhood. Attempting to integrate the two programs in such a way that the retail center pays for the residential program resulting in low-cost housing.

MS 1-4 *Micah Sherman, Untitled* In any low income housing situation the individual is rarely given the opportunity to customize their space. It was my goal to create a superstructure that allowed a modular system that would give individuals a lot of "land" and allow them, working within the modular setup, to create a space customized to their needs. A single family could create smaller interior space and leave some outdoor space along the outside edge for an exterior patio. A large family could maximize interior space and fill their entire lot.

More than a designed building I attempted to create a structure that would fill as people moved back to New Orleans, each new unit installation would be a visible reminder of people moving back to the city. Each empty space would be a visible reminder of the people who haven't.



